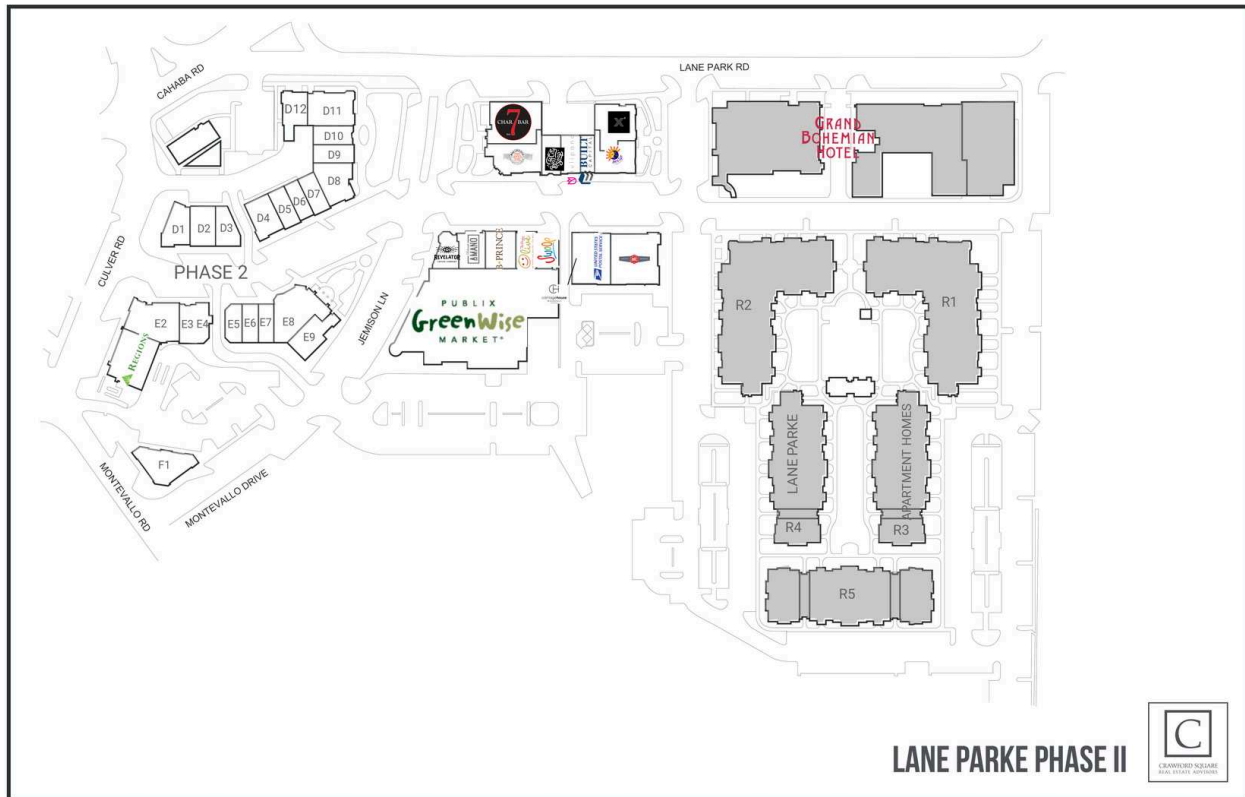


Lane Parke



A1 Greenwise Supermarket	28,684 SF	C5 Sol Y Luna	2,499 SF
A2 Revelator Coffee Company	1,750 SF	C6 X4	3,684 SF
A3 A'Mano	1,339 SF	D1 Available Phase II	2,262 SF
A4 Betsy Prince	2,632 SF	D10 Available Phase II	1,800 SF
A5a The Happy Olive	2,433 SF	D11 Available Phase II	3,454 SF
A5b Swoop	1,643 SF	D12 Available Phase II	2,200 SF
B1 ABC Select Spirits	5,600 SF	D2 Available Phase II	2,212 SF
B1a Carriage House	1,386 SF	D3 Available Phase II	2,182 SF
B2 United State Postal Service	3,200 SF	D4 Available Phase II	2,472 SF
C1 Charbar7	5,000 SF	D5 Available Phase II	1,500 SF
C2 Post Office Pies	3,444 SF	D6 Available Phase II	1,500 SF
C3 Buff City Soap	1,706 SF	D7 Available Phase II	1,500 SF
C4a Tulipano	1,792 SF	D8 Available Phase II	3,245 SF
C4b Build Capital	1,000 SF	D9 Available Phase II	1,560 SF

Lane Parke

E1 Regions Bank	4,441 SF	E7 Available Phase II	1,500 SF
E2 Available Phase II	4,303 SF	E8 Available Phase II	4,238 SF
E3 Available Phase II	1,472 SF	E9 Available Phase II	2,904 SF
E4 Available Phase II	1,500 SF	F1 Available Phase II	1,176 SF
E5 Available Phase II	1,435 SF	F2 Available Phase II	2,280 SF
E6 Available Phase II	1,450 SF		