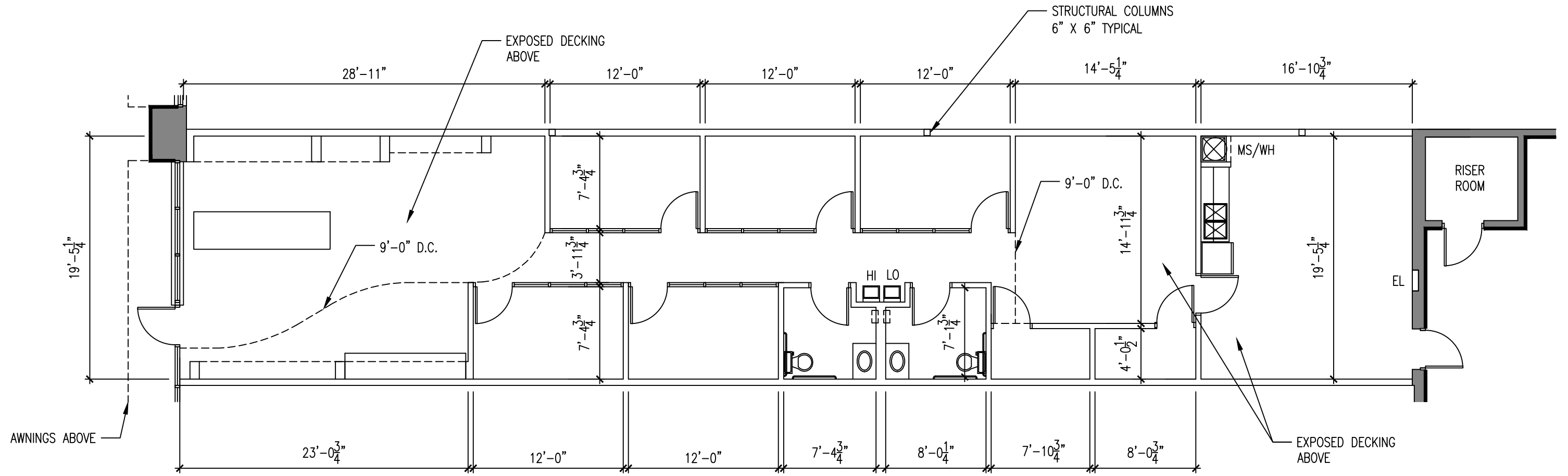


GENERAL NOTES:
8'-0" TYPICAL DROP CEILING
UNLESS OTHERWISE NOTED



+/- 2,000 TOTAL SF

EXISTING CONDITIONS



SUITE **5533**

THE GROVE
HWY 150 & Grove BLVD., Hoover, AL 35226

FAIRWAY MANAGEMENT GROUP
728 Shades Creek Pkwy #200,
Birmingham, AL 35209

PROJECT NO.
65.023
ISSUE DATE:
10 / 20 / 2020

This document is for marketing purposes only. The drawings are not be used outside of their intended use. Not responsible for an damages, liability and cost arising from any reuse or changes made to the drawing file. The use of this file indicates that the recipient accepts the above conditions. The information on this drawing is subject to change.