



CRAWFORD SQUARE
REAL ESTATE ADVISORS

Publix

SHOPS AT GAY STREET

138 South Gay Street · Auburn, AL 36830



FEATURED TENANTS



Publix®

LEASING AGENT
WILL REIS +1 (205) 453-6240
will@crawfordsq.com

PROPERTY HIGHLIGHTS

- Located directly adjacent to Auburn University with more than 25,000 students enrolled per year
- Anchored by highly productive Publix grocery store
- Popular neighboring retailers and restaurants include Fab'rik, The Locker Room, Mountain High Outfitters, and Hamilton's On Magnolia
- Proximate to historic Toomer's Drugstore

POPULATION

3 mile 62,020
5 mile 87,814
10 mile 127,677

DAYTIME POPULATION

3 mile 63,819
5 mile 89,927
10 mile 130,383

DEMOGRAPHICS



HOUSEHOLDS

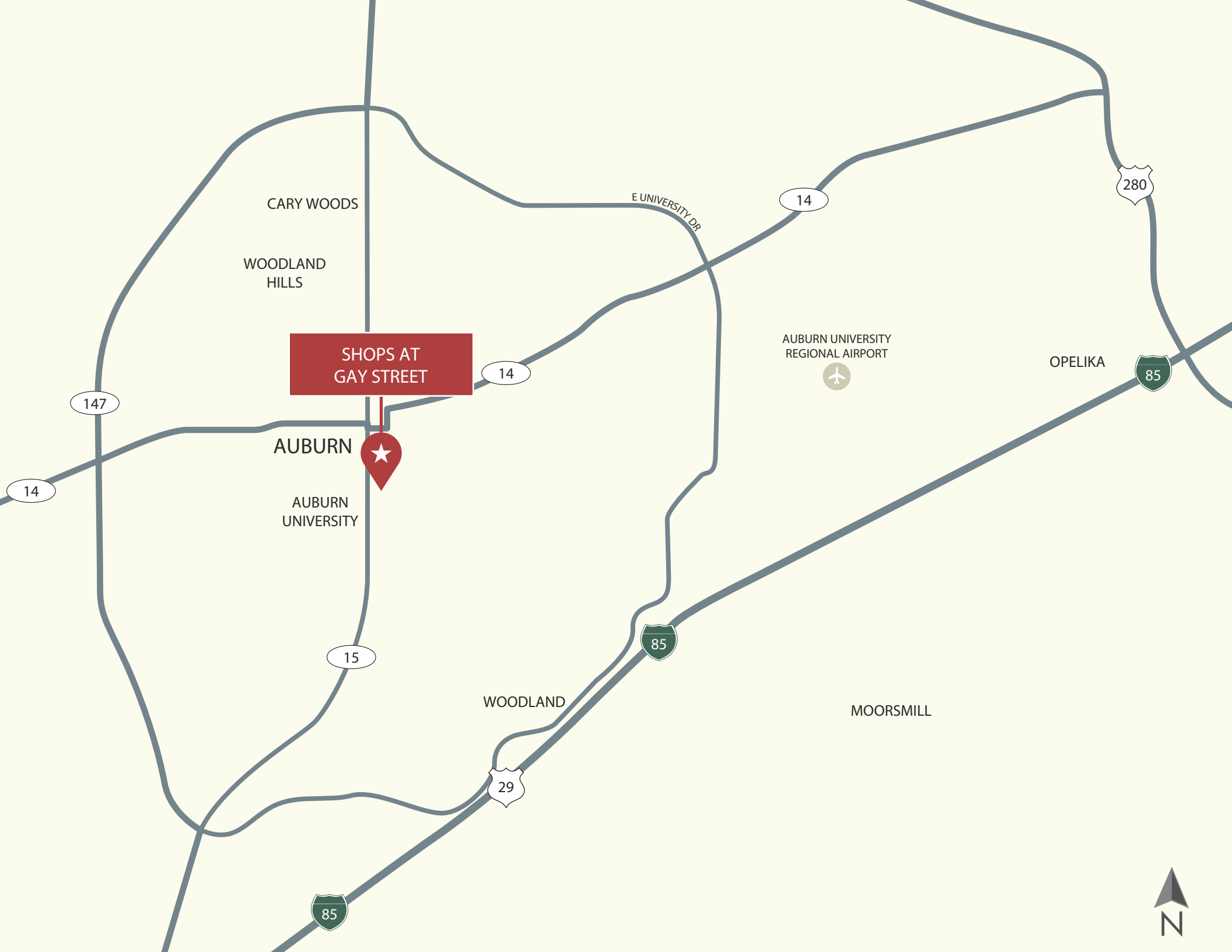
3 mile 25,412
5 mile 35,234
10 mile 51,540

AVG HH INCOME (\$)

3 mile 71,726
5 mile 78,711
10 mile 78,668

MED HH INCOME (\$)

3 mile 42,494
5 mile 49,302
10 mile 51,594



SHOPS AT
GAY STREET



CARY WOODS

WOODLAND
HILLS

AUBURN

AUBURN
UNIVERSITY

AUBURN UNIVERSITY
REGIONAL AIRPORT



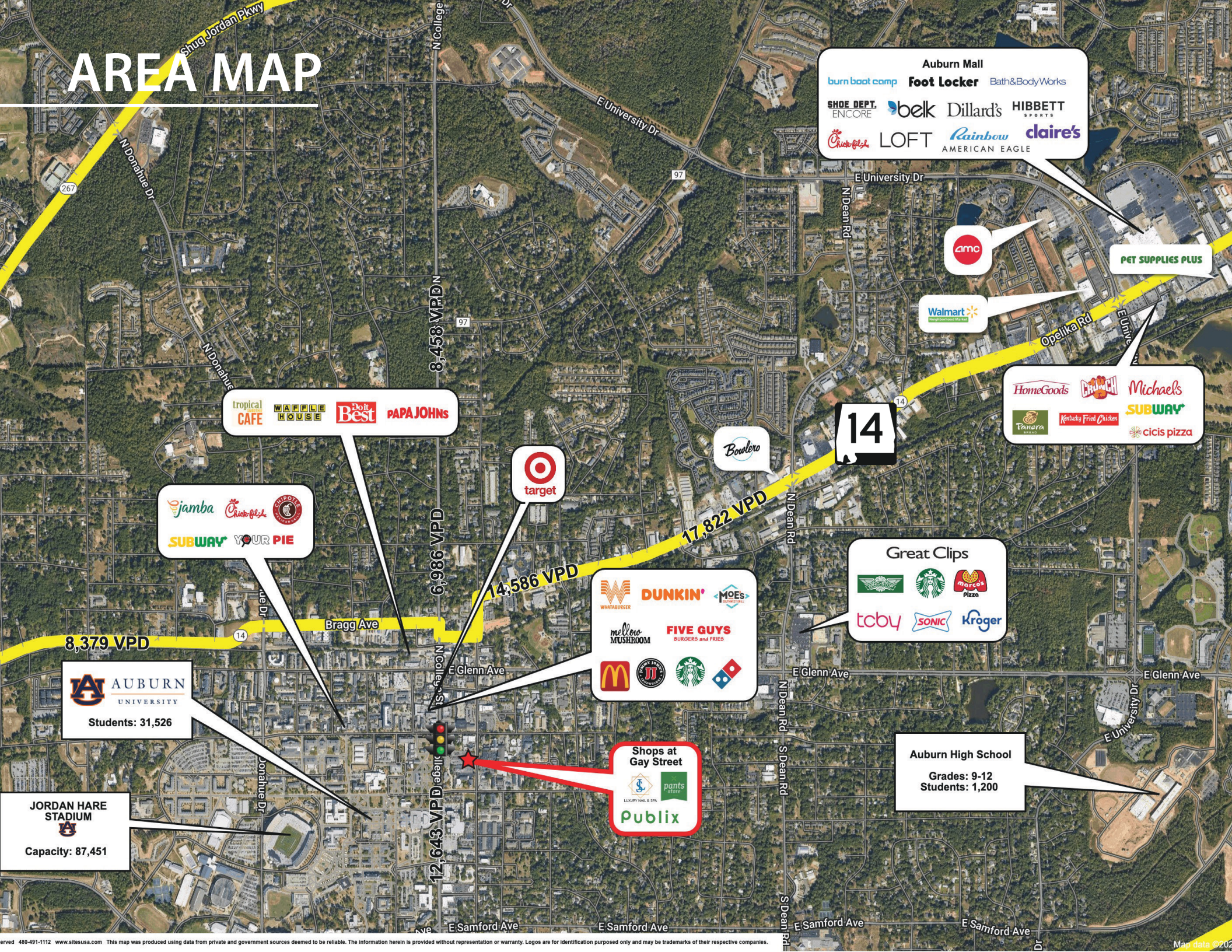
OPELIKA

WOODLAND

MOORSMILL



AREA MAP



AREA MAP

